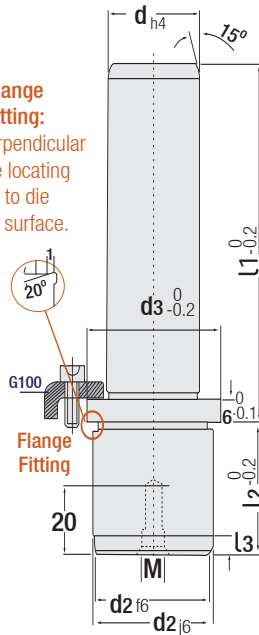




Code: G15

Guide Pillar, Thickbacked

**Flange Fitting:**  
It is perpendicular angle locating on to die plate surface.



Code: G15

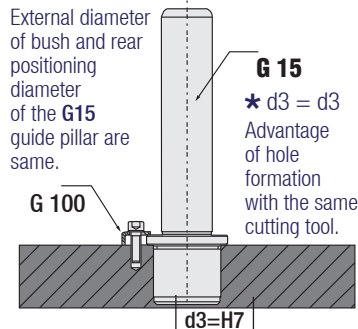
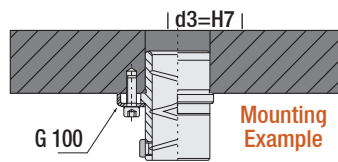
Ø d	l1	d2	d3	l2	l3	d5	M
20	100	28	34	23	4	46.2	M8
	125						
	140						
	160						
	180						
200							
25	100	34	39	30	6	51.4	M8
	125						
	140						
	160						
	180						
	200						
	220						
240							
30	125	39	44	37	6	56.6	M8
	140						
	160						
	180						
	200						
	220						
	240						
	260						
315							

GTH guide pillars are polished with surface polishing machine at final stage of production (after grinding).

Material: 1.1213 (Cf53)  
Hardness: 58 - 62 HRC

Operating Components: G100 - G33  
G34 - G35 - G36 - G40 - G42

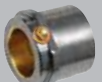
Order: G15. d x l1



Compatible Bushes



G 40 - 44



G 35 - 36

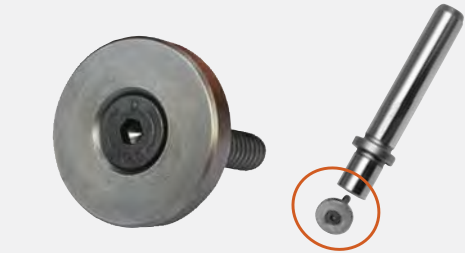
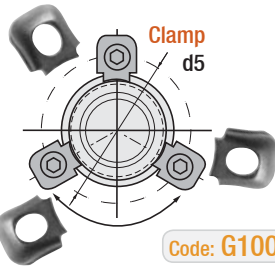


G 33 - 34

**G15 / Guide Pillar, Thickbacked**  
It is used as guiding component at dies and blow moulds.

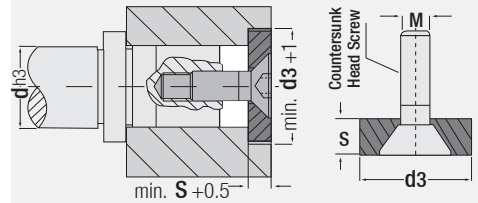
**Advantageous Product:**  
Pillar mounting diameter and bush mounting diameter have the same tolerance value. In machining of guide pillar / bush holes on dies with the advantage of using same cutting tool (drill / reamer) for both guide pillar & bushes hole. Thus, the necessity of using different cutting tools will disappear.

Code: G100



Code: G110

Mounting Flange  
Guide pillar fixation & Support washer



\* Reliable product used for guide pillar with centre collar mountings min. d3 + 1  
\* It can also be used to support for ejector plates in injection moulds / etc.

Ø d3	Pillar Diameter d	Flange S	Screw M
22	Ø 15 / 16	5.5 mm	M8 x 20
25	Ø 19 / 20		
32	Ø 24 / 25		
40	Ø 32 / 30	7.5	
50	Ø 38 / 40	9.5 mm	
60	Ø 48 / 50		
73	Ø 60 / 63		
93	Ø 80	12	M12 x 20

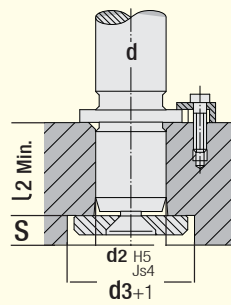
Order: G110. d3

Usage: Guide pillar fixation (Die)  
Support washer (Mould)

Mounting Dimensions and Tolerances of Demountable Die Guide Pillars

**Technical Info**  
**Dimensions Given:**  
Recommended (suggestion) for product: G10 Guide pillar.

**Mounting System:**  
Soft tight fitting system has been selected and determined for G10 Guide pillar.



"d" Guide Pillar Dia.	d2 H5	d3 +1	L2	S
15 / 16	+0.008	22	14.5	5.5
19 / 20	+0.009	25	17.5	5.5
24 / 25	+0.009	32	24.5	5.5
30 / 32	+0.011	40	29.5	7.5
38 / 40	+0.011	50	27.5	9.5
48 / 50	+0.013	60	37.5	9.5
60 / 63	+0.013	80	37.5	9.5
80	+0.013	95	48	12